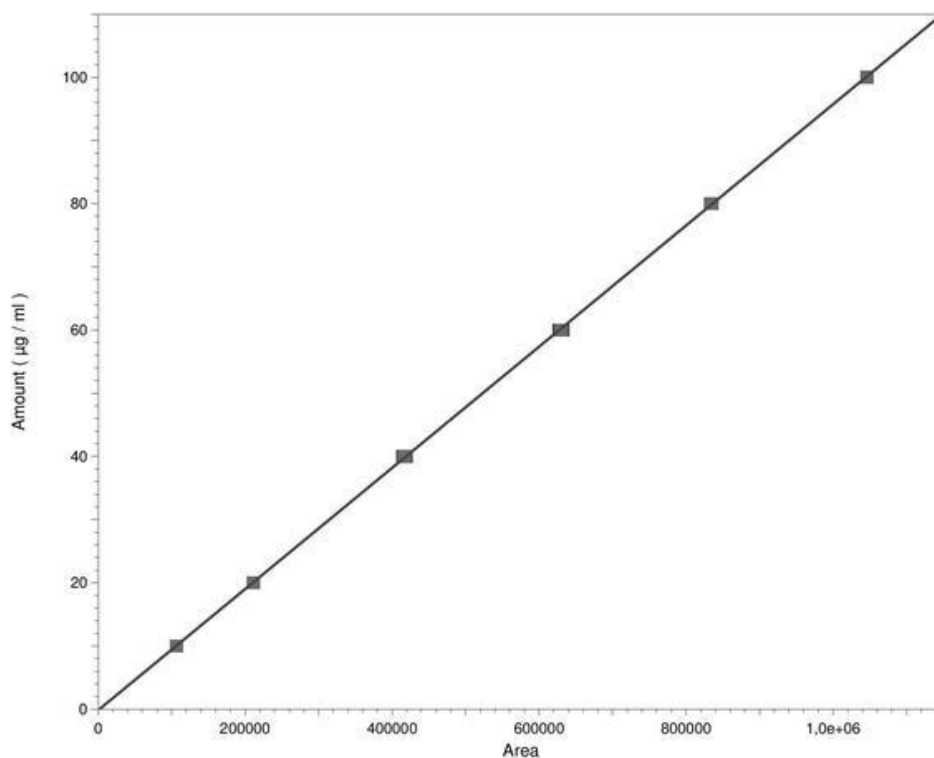


External Standard Report

Page 3 of 3

Method Name: D:\Enterprise\Europa\Method\U - 0.5ml - 10-90 - C1 - 190-400nm - 02,5min - 273nm - 40-23°C - 50 Hz - Cal The-Cof.met
 Data: D:\Enterprise\Europa\Result\2016\2016 - Tests und Kalibrierungen\Koffein-Theophyllin 080416
 Ext. Standard\Probe-P1-2016-04-08 16-36-41 (GMT +02-00)-Rep2.dat
 User: SYSTEM (SYSTEM)
 Acquired: 08.04.2016 16:37:23 (GMT +02:00)
 Printed: 20.04.2016 10:32:15 (GMT +02:00)

Peak: Coffein -- ESTD -- PDA-1 [Channel 1]



	Level 1	Level 2	Level 3	Level 4	Level 5	Level 6
Amount	10	20	40	60	80	100
Area	106519	211146	416762	629870	834121	1046044
RF	9,387996507	9,472141248	9,597815537	9,525775159	9,590934648	9,559827311
	6653e-005	5703e-005	18374e-005	95364e-005	57017e-005	27945e-005
Last Area	106609	211430	414519	627197	833321	
Residual	-0,0388608	-0,0690908	0,219117	-0,210958	0,208109	-0,108316
Rep StDev	127,279	402,344	3171,37	3780,19	1131,37	
Rep %RSD	0,11949	0,190553	0,760957	0,600154	0,135636	
Rep 1 Area	106609	211430	414519	627197	833321	1046044
Rep 2 Area	106429	210861	419004	632543	834921	